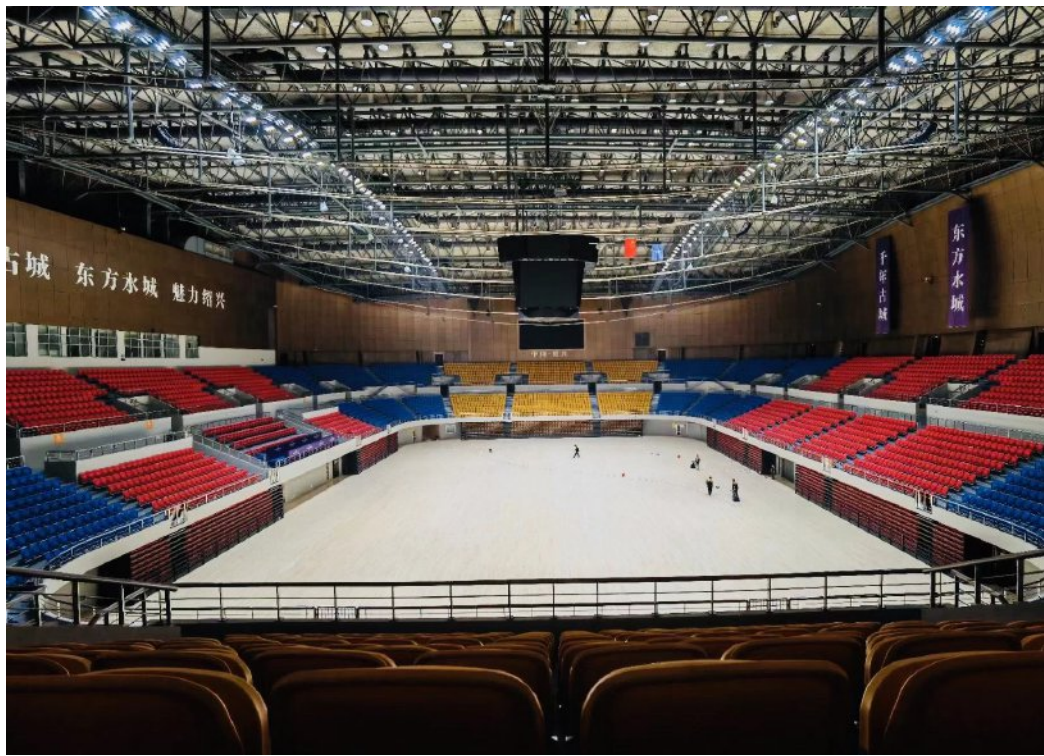


The ShaoXing Olympic Sports Center basketball Hall Case Study

HD LIVE, MBA STANDARD

SolaroneVision System
Solution:
FL-9M630W 120PCS
High Performance Series
LED Sports Lights



Customer Profile

The ShaoXing Olympic Sports Center is designed according to the first-class gymnasium. It is the largest sports exhibition in ZheJiang Province which cover a area of 72,000 square meters and able accommodate 9785 spectators. The stadium can hold International and national basketball and volleyball competitions.

Scope of Work

Lighting standards for MBA Standard, HD LIVE illumination play were a must. As a result:

Horizontal Average Lux: 3500lux, U2= 0.9, Ra>90

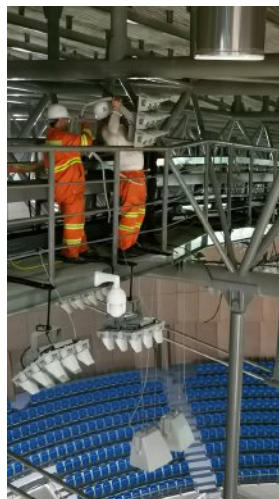
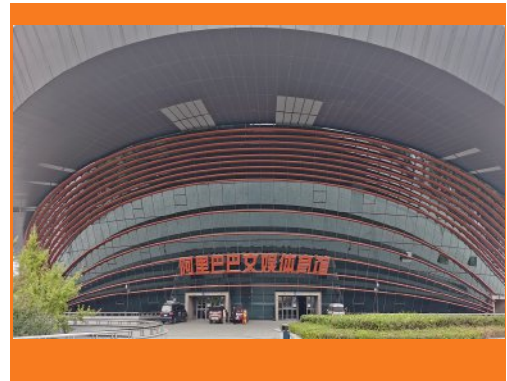
Vertical Average lux: 1600lux, U2= 0.9, Ra>90

During to the excellent light system solution, the budgetary and performance expectations were able to be met.

The Solution

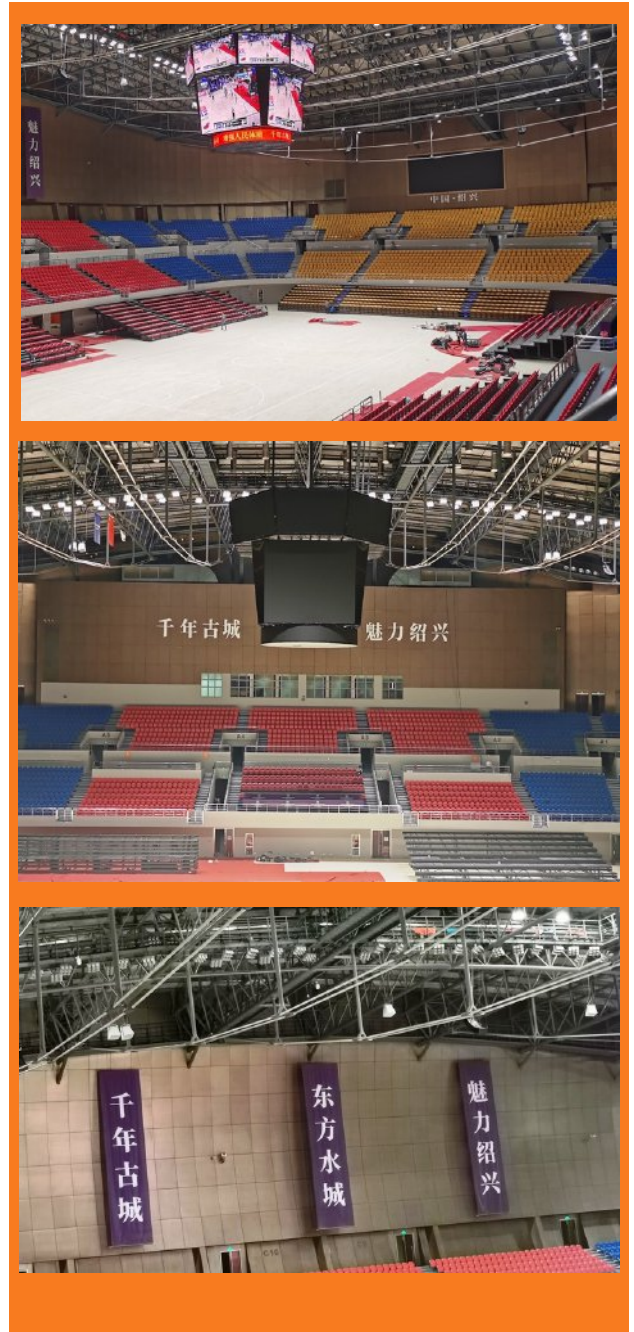
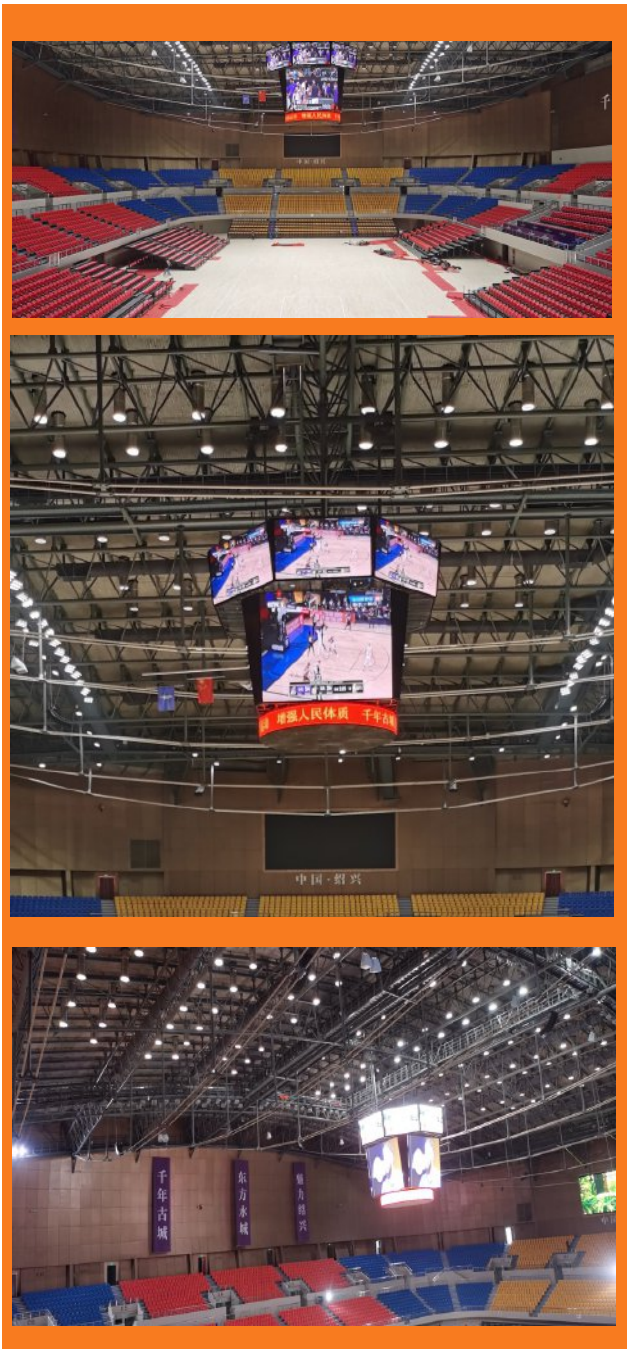
FL9M-630W High Performance Series LED sports lights CCT: 5300K With 120pcs were installed.

Also, a networking control system was incorporated to allow for remote on/off control /monitoring, and switch to different working mode



Enhance Athlete Performance

The Results



Solarone approaches each project as a unique opportunity to exceed the customers', the players' and the observers' expectations in terms of improved lighting delivered, improved visual comfort and operational savings. Our process steps help streamline this effort. We will meet directly with financial decision makers to go over final proposal in detail. Solarone will work with the customer's contractor to provide them with detailed computer aiming points which can be set while on the ground.



Tennis Courts



Recreational Facilities



Ice Rinks



Football Stadiums



Trap and Skeet